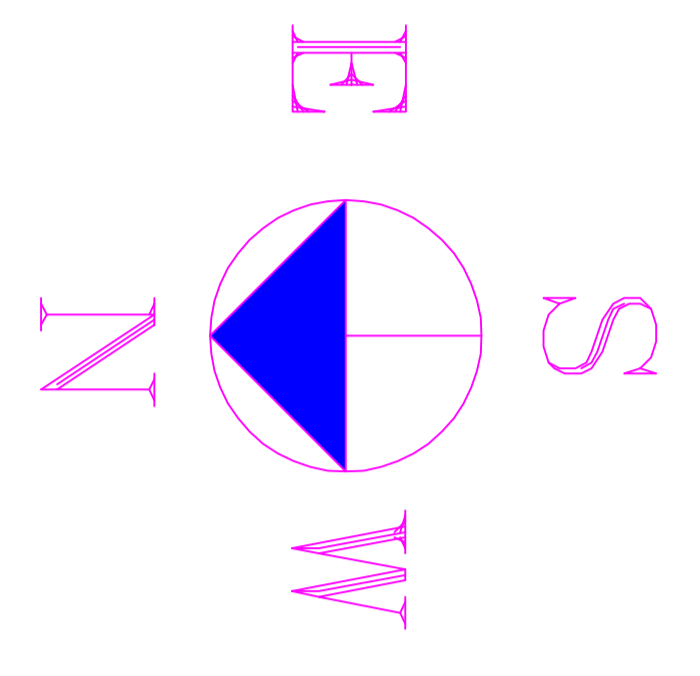
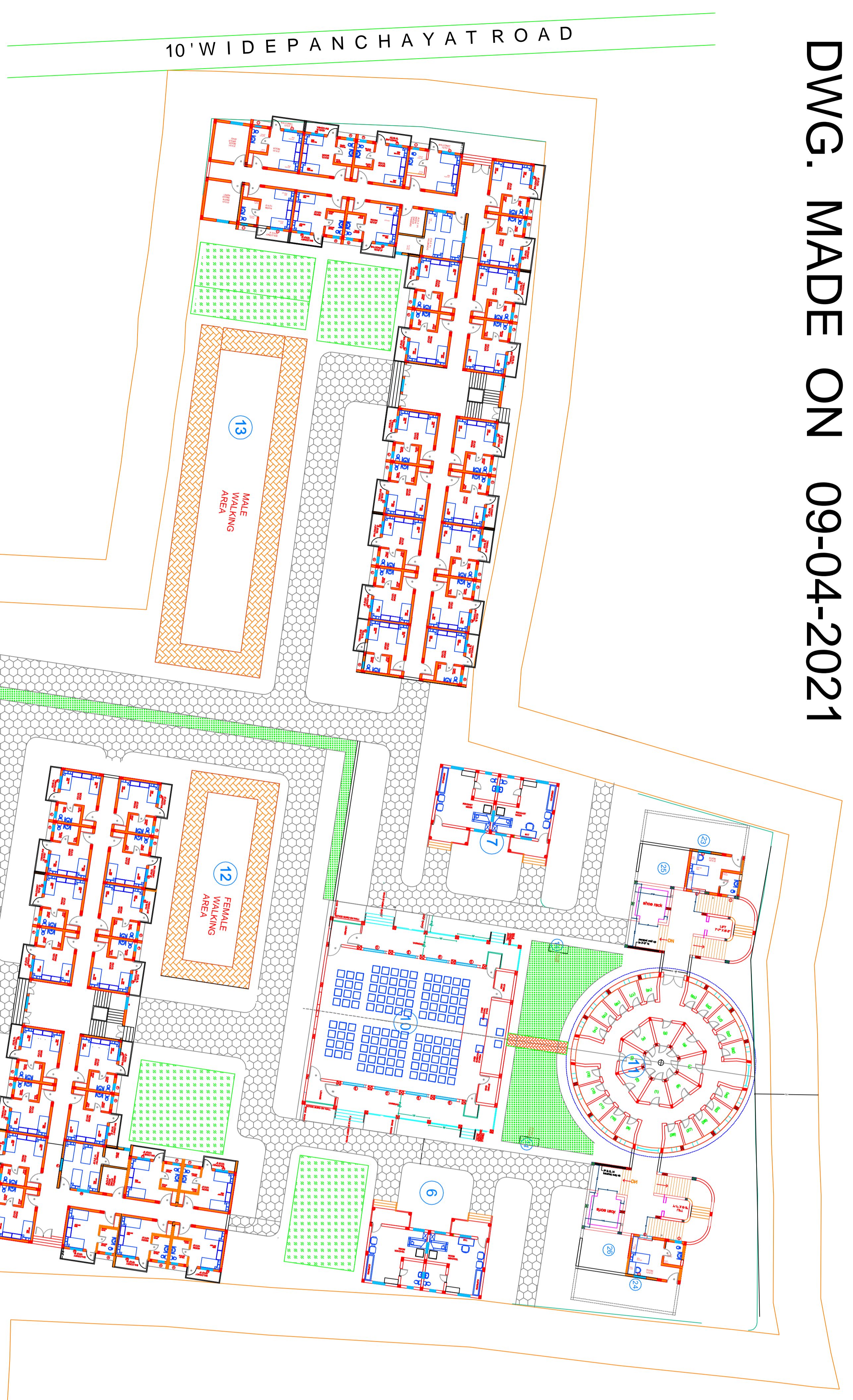
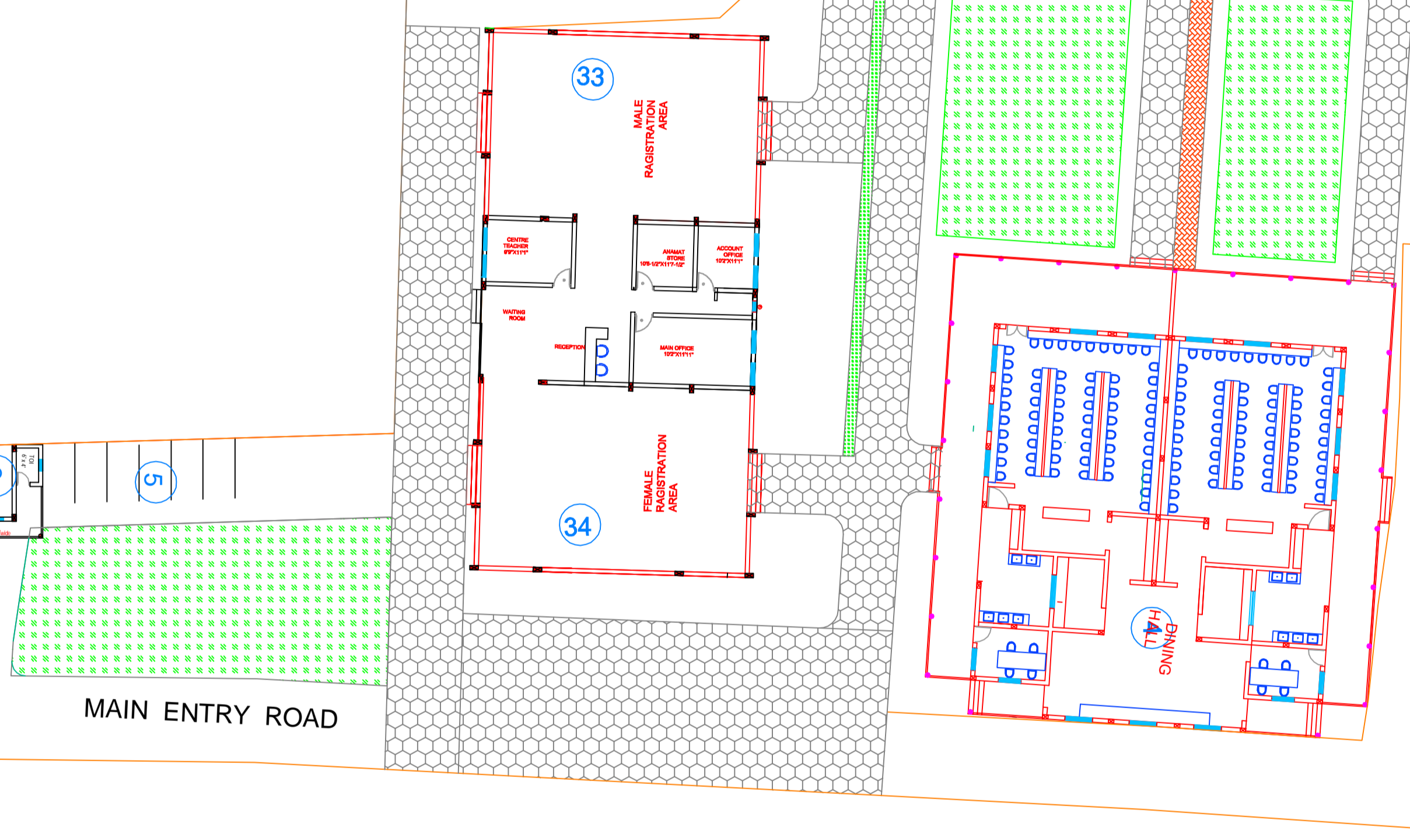


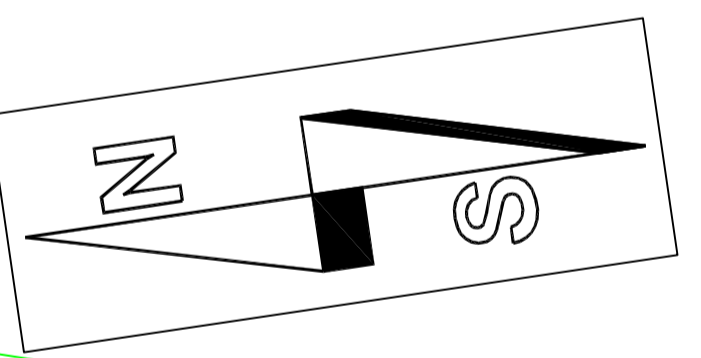
DWG. MADE ON 09-04-2021



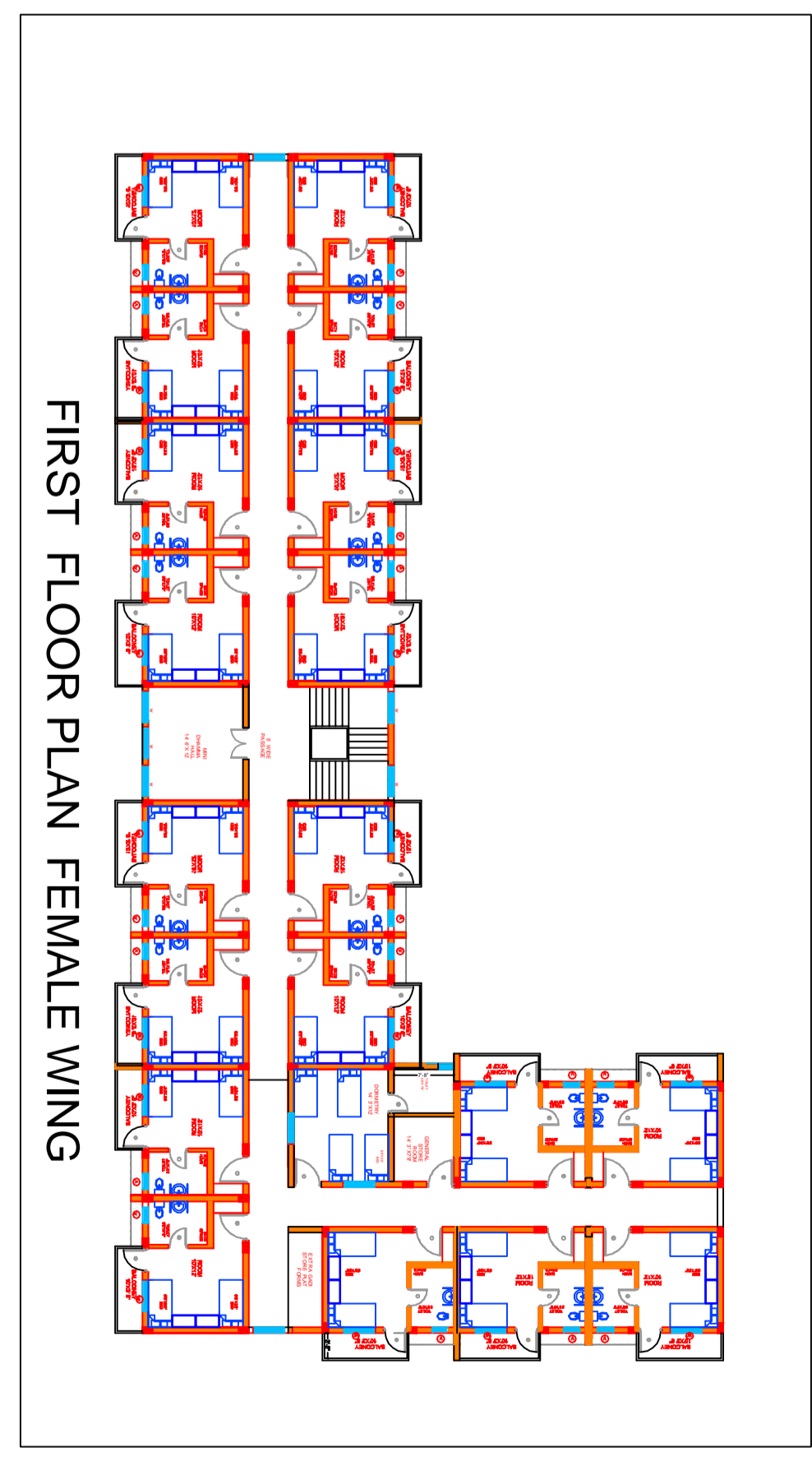
GROND FLOOR PLAN



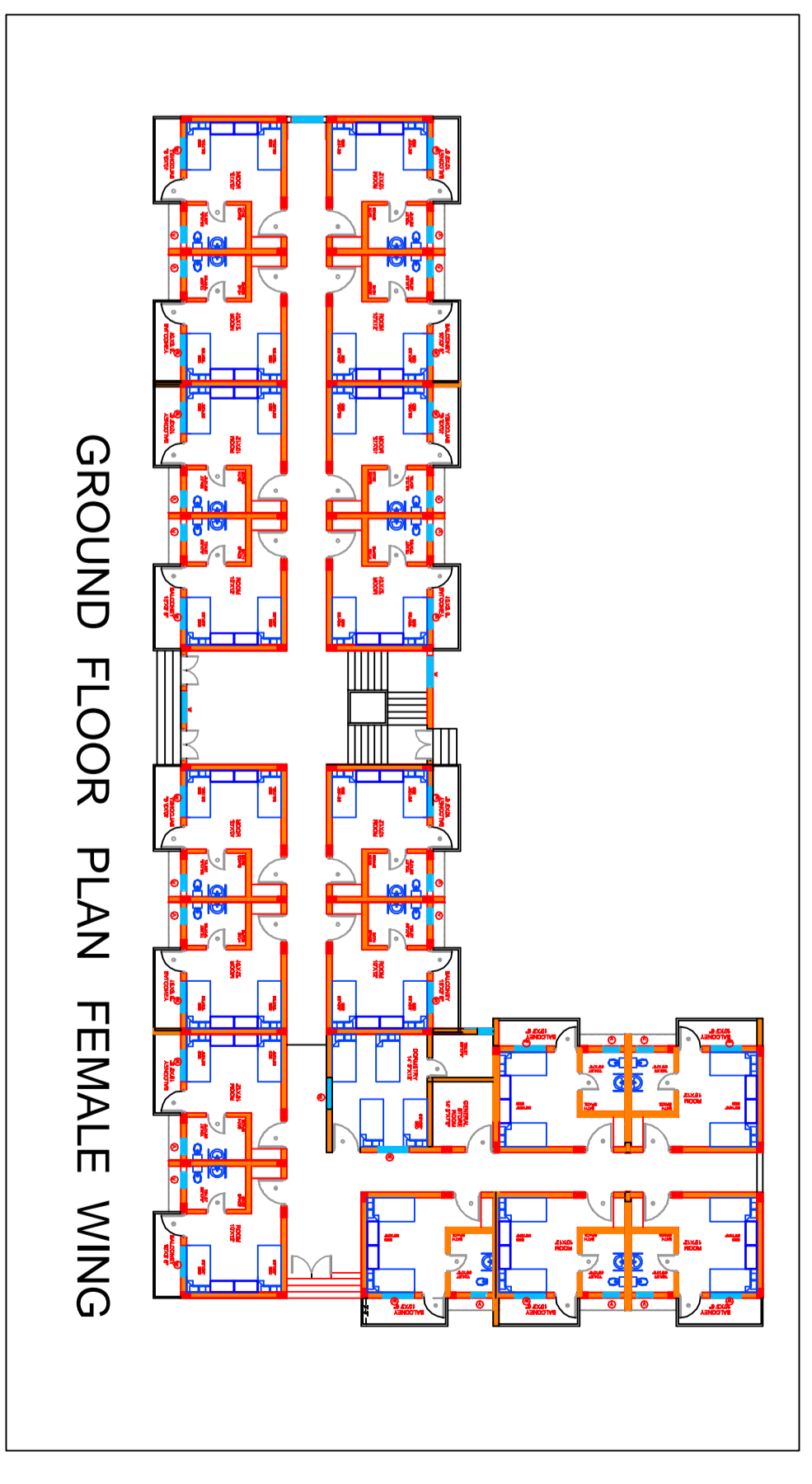
MAIN ENTRY ROAD



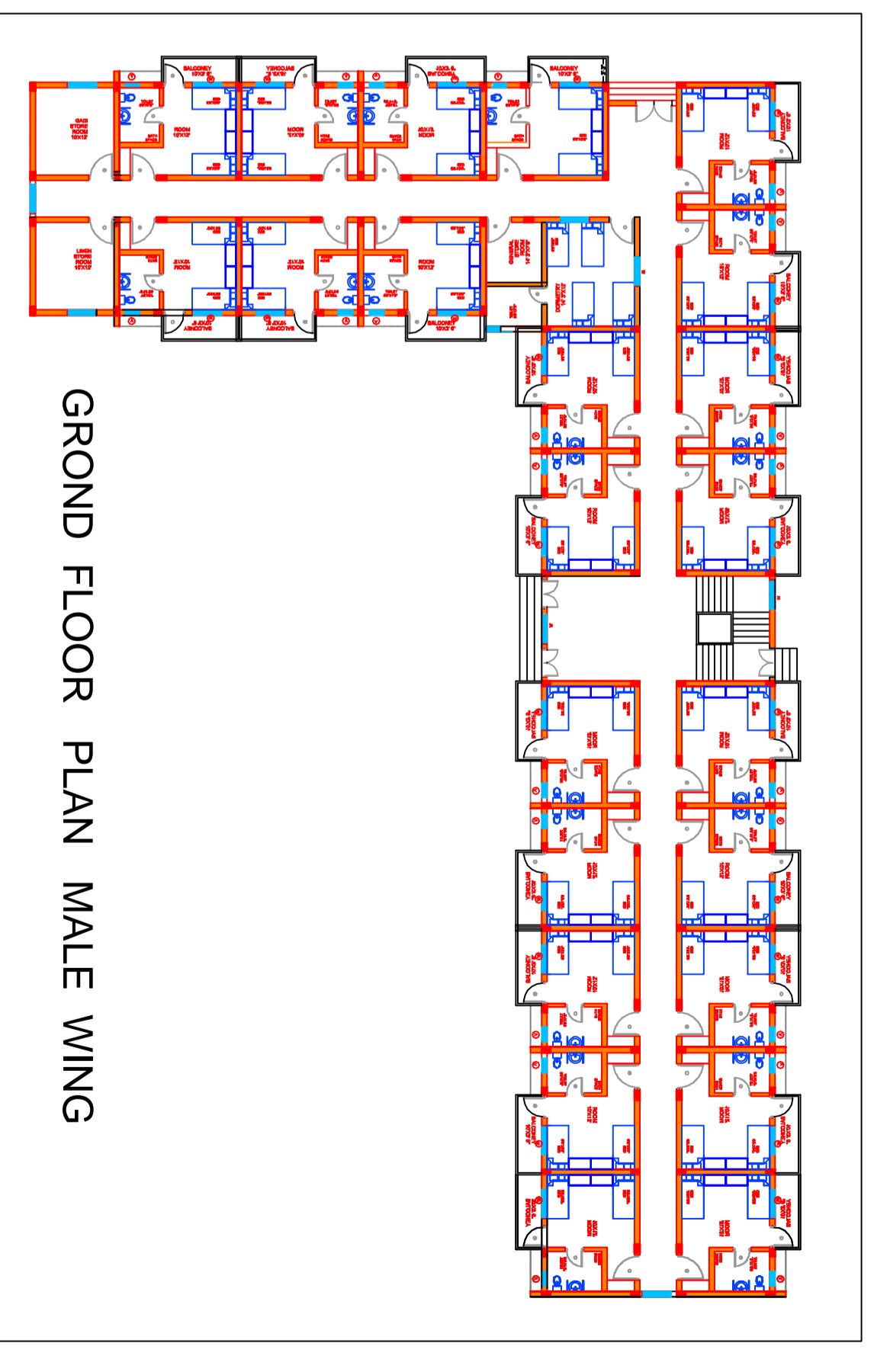
THE PROPOSED CONSTRUCTION OF THE COMPOUND WALL ON THE COMBINED LAND BOUNDARY LAND OF J.L. NO 86
 R.S. NO 3123 TO 3188 OF VILLAGE SONARPUR, SOUTH 24 P.G.N.S., AT MOUZA BAWANGACHHI, AT CALCUTTA, FOR
 VIPASSANA MEDITATION CENTRE, DHAMMABANGA AT CALCUTTA.



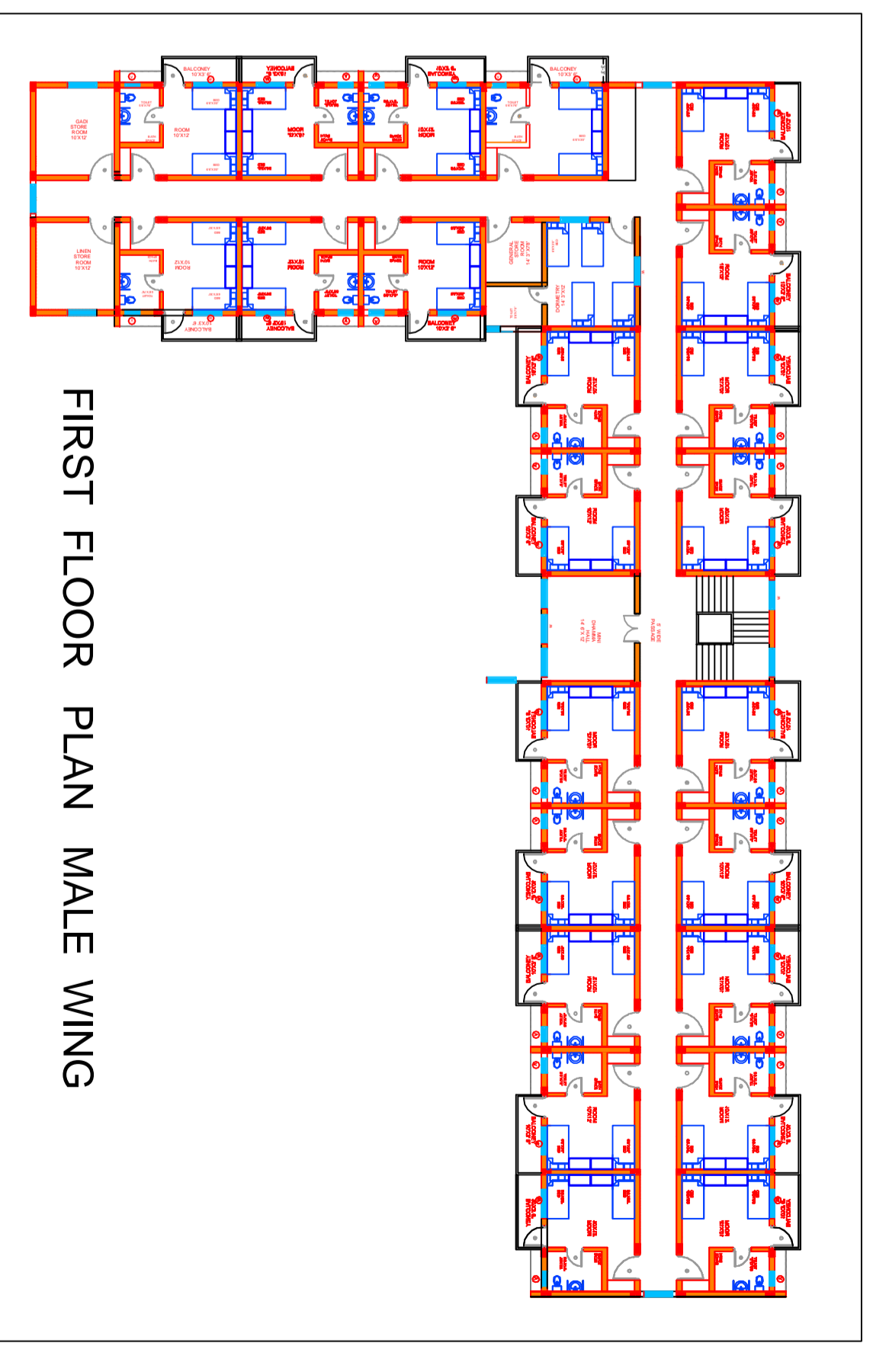
FIRST FLOOR PLAN FEMALE WING



GROUND FLOOR PLAN FEMALE WING



GROUND FLOOR PLAN MALE WING



FIRST FLOOR PLAN MALE WING